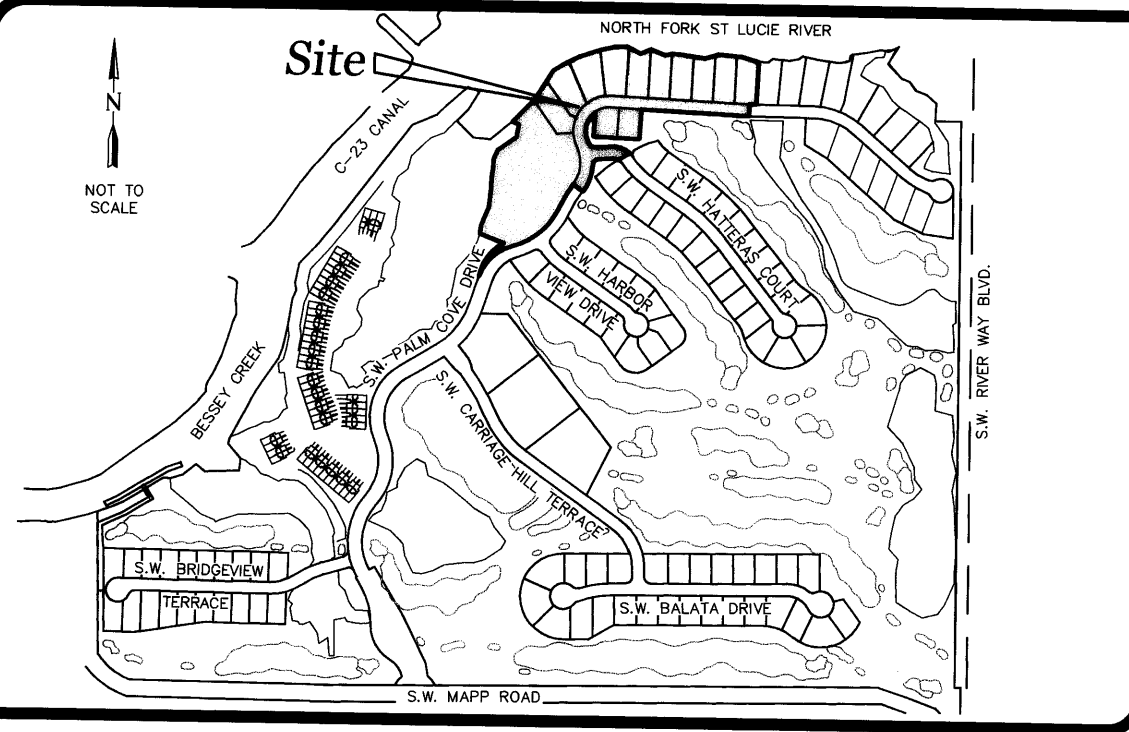


Palm Cove Golf & Yacht Club Phase 19, A P.U.D.(r)

Plat Book 15 Pg 40
Sheet 4

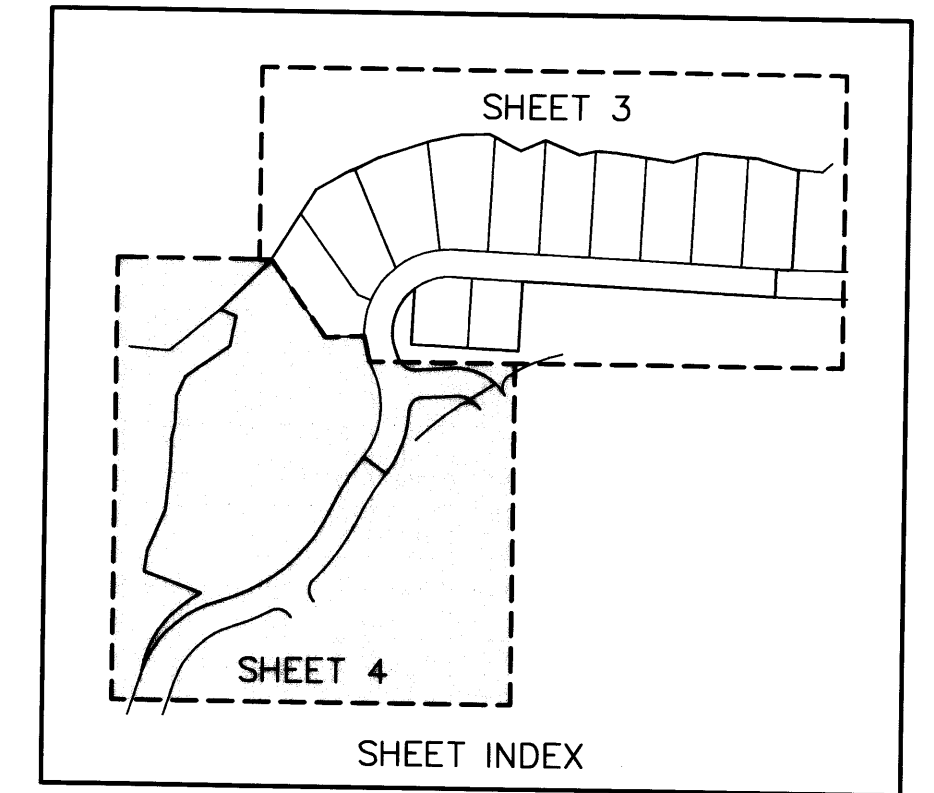
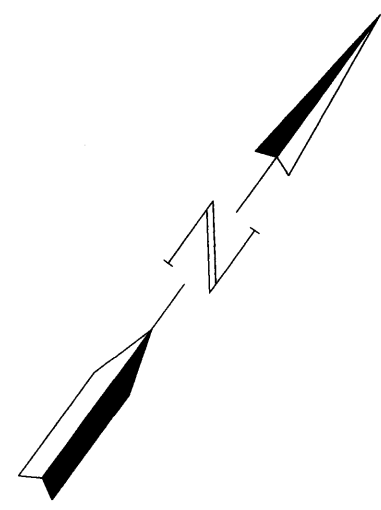
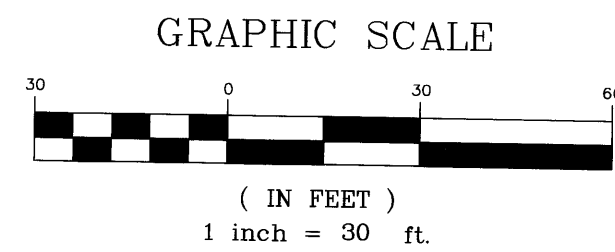
Being a parcel of land lying in Section 6, Township 38 South, Range 41 East and also being a replat of a portion of the Plat of Phases 3 and 8, Cutter Sound P.U.D. as recorded in Plat Book 12, Page 50, public records, Martin County, Florida, and a portion of the Plat of Phases 4 and 5, Cutter Sound P.U.D. as recorded in Plat Book 12, Page 74, public records, Martin County, Florida.



LOCATION MAP

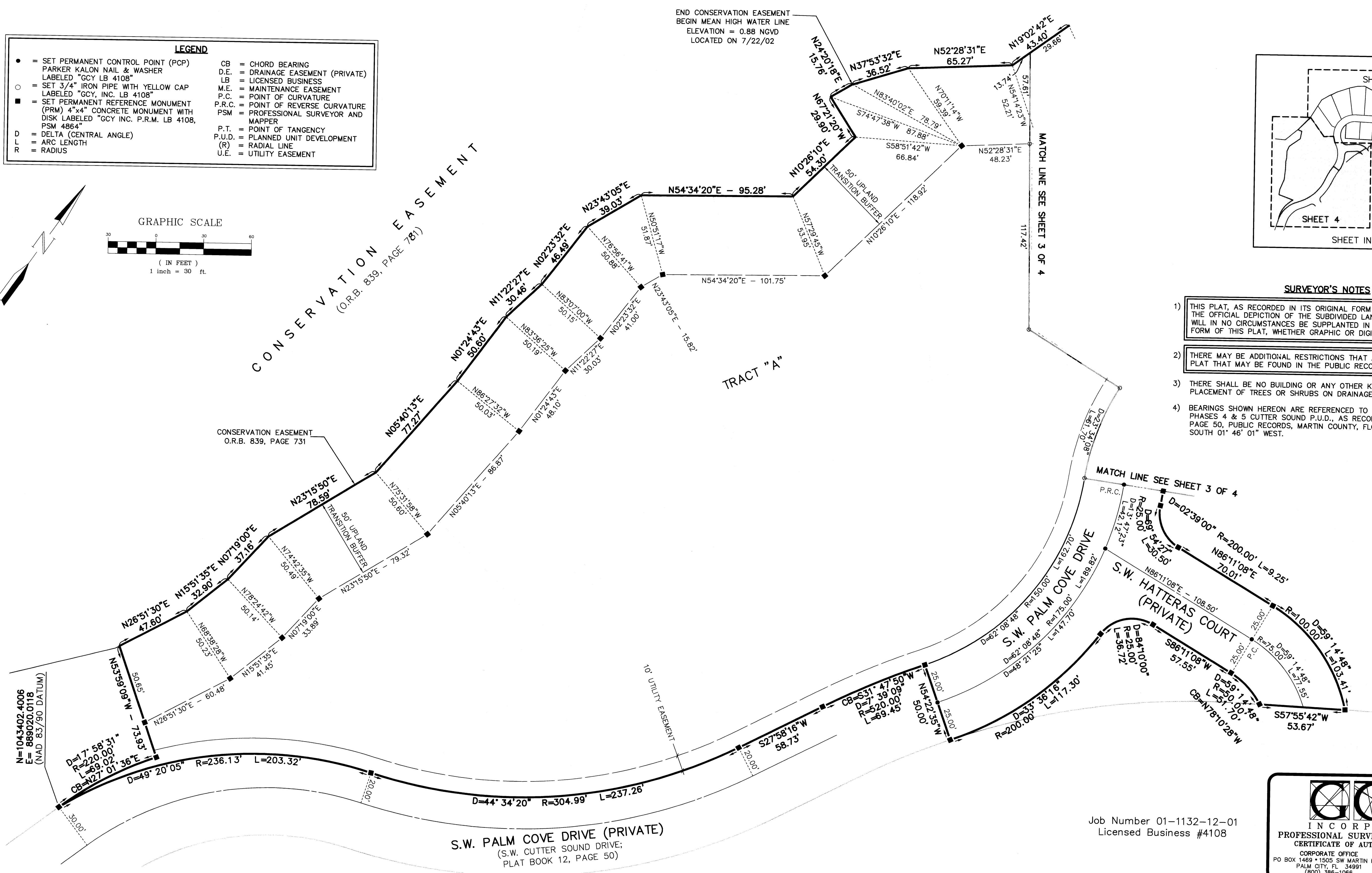
October 2002

LEGEND	
•	= SET PERMANENT CONTROL POINT (PCP) PARKER KALON NAIL & WASHER LABELED "GCY LB 4108"
○	= SET 3/4" IRON PIPE WITH YELLOW CAP LABELED "GCY, INC. LB 4108"
■	= SET PERMANENT REFERENCE MONUMENT (PRM) 4"x4" CONCRETE MONUMENT WITH DISK LABELED "GCY INC. P.R.M. LB 4108, PSM 4864"
D	= DELTA (CENTRAL ANGLE)
L	= ARC LENGTH
R	= RADIUS
CB	= CHORD BEARING
D.E.	= DRAINAGE EASEMENT (PRIVATE)
LB	= LICENSED BUSINESS
M.E.	= MAINTENANCE EASEMENT
P.C.	= POINT OF CURVATURE
P.R.C.	= POINT OF REVERSE CURVATURE
PSM	= PROFESSIONAL SURVEYOR AND MAPPER
P.T.	= POINT OF TANGENCY
P.U.D.	= PLANNED UNIT DEVELOPMENT
(R)	= RADIAL LINE
U.E.	= UTILITY EASEMENT



SURVEYOR'S NOTES

- 1) THIS PLAT, AS RECORDED IN ITS ORIGINAL FORM IN THE PUBLIC RECORDS, IS THE OFFICIAL DEPICTION OF THE SUBDIVIDED LANDS DESCRIBED HEREON AND WILL IN NO CIRCUMSTANCES BE SUPPLANTED IN AUTHORITY BY ANY OTHER FORM OF THIS PLAT, WHETHER GRAPHIC OR DIGITAL.
- 2) THERE MAY BE ADDITIONAL RESTRICTIONS THAT ARE NOT RECORDED ON THIS PLAT THAT MAY BE FOUND IN THE PUBLIC RECORDS OF THIS COUNTY.
- 3) THERE SHALL BE NO BUILDING OR ANY OTHER KIND OF CONSTRUCTION, OR PLACEMENT OF TREES OR SHRUBS ON DRAINAGE EASEMENTS.
- 4) BEARINGS SHOWN HEREON ARE REFERENCED TO THE WEST LINE OF LOT 4 PHASES 4 & 5 CUTTER SOUND P.U.D., AS RECORDED IN PLAT BOOK 12, PAGE 50, PUBLIC RECORDS, MARTIN COUNTY, FLORIDA. SAID LINE BEARS SOUTH 01° 46' 01" WEST.



Job Number 01-1132-12-01
Licensed Business #4108

GCY
INCORPORATED
PROFESSIONAL SURVEYORS AND MAPPERS
CERTIFICATE OF AUTHORIZATION LB 4108
CORPORATE OFFICE: TALLAHASSEE OFFICE
PO BOX 1469 • 1505 SW MARTIN HWY. 4909 N. MONROE STREET
PALM CITY, FL 34991 TALLAHASSEE, FL 32303
(850) 386-1066 (850) 536-8455